

App Note 3517: Estimating Super Capacitor Backup Time on Trickle-Charger Real-Time Clocks

The Dallas Semiconductor/Maxim real-time clock (RTC) family includes a number of parts with integrated trickle-charging circuitry. The trickle charger can be used to charge a secondary battery or capacitor. The battery or capacitor is used to maintain operation of the clock when the supply voltage on V_{CC} is absent. The energy stored in the capacitor will maintain clock operation for a period of time, determined by several factors. This application note discusses methods used to calculate backup time, based on capacitor size.

The Charging Circuit

A typical trickle-charger circuit diagram is shown in **Figure 1**. A specific four-bit pattern in the upper nibble of the trickle-charger register is used to enable the trickle charger. The lower four bits are used to select a voltage-dropping diode and current-limiting resistor. In the diagram below, either one diode or no diode can be inserted into the charging path, and the resistor values that can be selected are 250Ω , $2k\Omega$, or $4k\Omega$. Some devices provide different diode and resistor configurations (check the device datasheet for details). The capacitor is connected from V_{BACKUP} to ground (**Figure 2**).

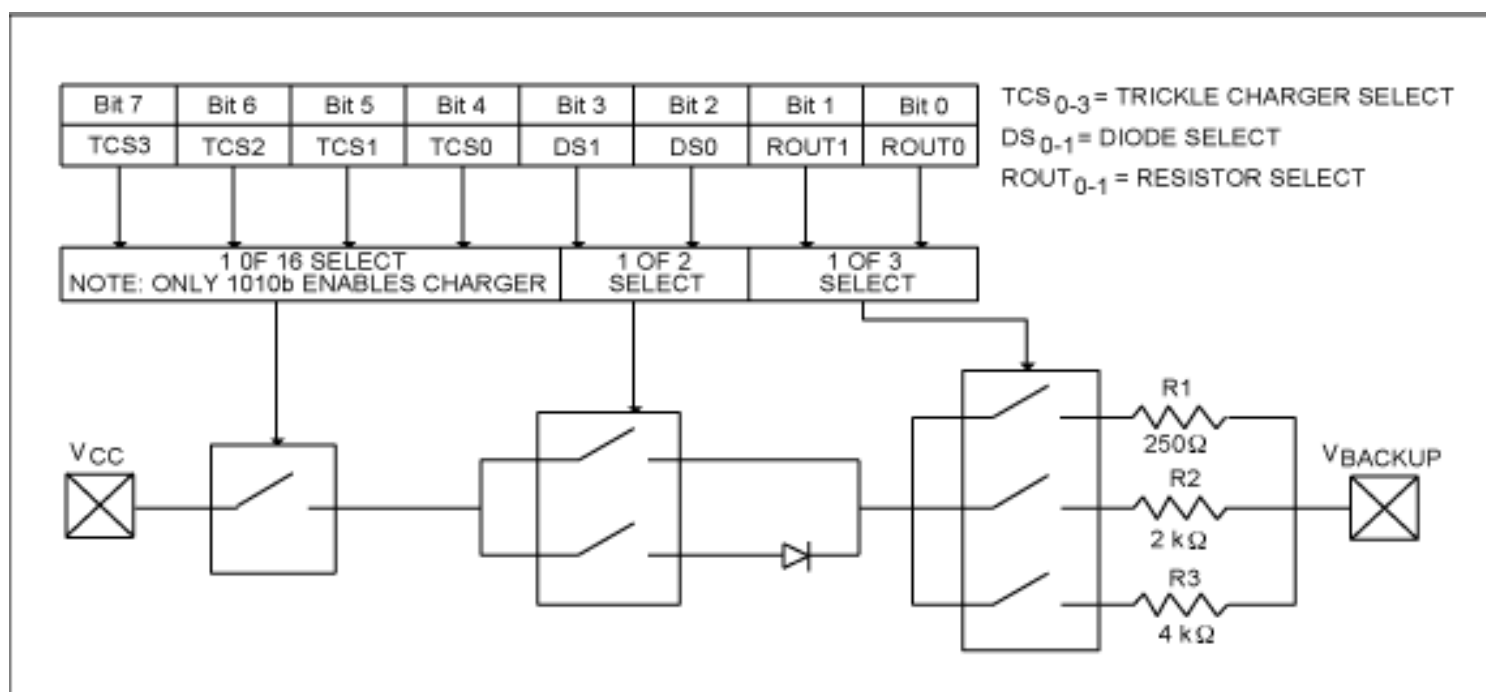


Figure 1. Typical trickle-charging circuit

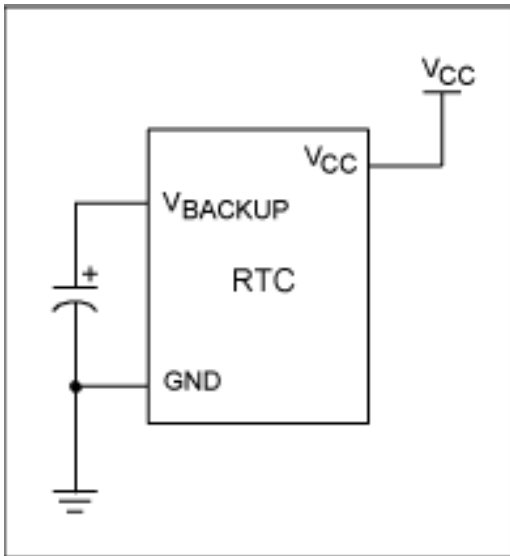


Figure 2. Typical circuit

The user determines the diode and resistor selection according to the maximum current required for capacitor charging. Contact the manufacturer of the capacitor or check the capacitor datasheet for charging-current limits.

Charging-Current Calculations

The maximum charging current can be calculated as follows: Assume that a system power supply of 3.3V is applied to V_{CC} , and that the trickle charger has been enabled with no diode and a $2k\Omega$ resistor. The maximum current, when the capacitor voltage is zero, would be calculated as:

$$\begin{aligned}
 I_{MAX} &= (V_{CC} - \text{diode drop})/R2 \\
 &= (3.3V-0V)/R2 \\
 &\approx (3.3V-0V)/2k\Omega \\
 &\approx 1.65mA
 \end{aligned}$$

As the voltage on V_{BACKUP} increases, the charging current decreases.

Calculating Backup Time

Now we need to determine how large the capacitor needs to be. Given the desired backup time, we need to know several other parameters: The starting and ending voltage on the capacitor, the current draw from the capacitor, and the capacitor size.

If we assume that the RTC draws a constant current while running from V_{BACKUP} , then calculating the worst-case backup time in hours would use the formula:

$$C(V_{BACKUPSTART} - V_{BACKUPMIN})/I_{BACKUPMAX}/3600$$

where C is the capacitor value in farads.

$V_{BACKUPSTART}$ is the initial voltage in volts. The voltage applied to V_{CC} , less the voltage drop from the diodes, if any, used in the charging circuit.

$V_{BACKUPMIN}$ is the ending voltage in volts (the minimum oscillator operating voltage).

$I_{BACKUPMAX}$ is the maximum datasheet V_{BACKUP} current in amps

Given that $C = 0.2F$, $V_{BACKUPSTART} = 3.3V$, $V_{BACKUPMIN} = 1.3V$, and $I_{BACKUPMAX} = 1000nA$, then:

$$\text{Hours} = 0.2(3.3-1.3)/(1e-6)/3600 = 0.2(2.0)(1e-6)/3600 = 111.1$$

If we want to know what the typical backup time should be, we would substitute the I_{BACKUP} typical value for I_{BACKUP} maximum.

Therefore, if V_{BACKUP} is 3.3V (typ) and I_{BACKUP} is 600nA (typ), then:

$$\text{Hours} = 0.2(3.3-1.3)/(600\text{e-}9)/3600 = 0.2(2.0)(600\text{e-}9)/3600 = 185.2$$

These calculations assume that I_{BACKUP} is constant, regardless of the voltage on V_{BACKUP} . The oscillator on Dallas/Maxim RTCs tends to act more like a resistor, so that backup current tends to decrease with the backup voltage. It should therefore be possible to calculate a more realistic backup time.

From basic electronics, the formula to determine the voltage across a capacitor at any given time (for the discharge circuit below) is:

$$V(t) = E(1 - e^{-t/RC})$$

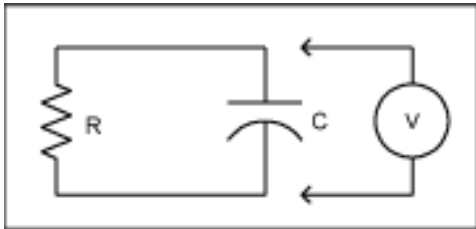


Figure 3. Discharge circuit

Where t is the time in seconds
 E is the initial voltage in volts
 V is the ending voltage in volts
 R is the resistive load in ohms
 C is the capacitor value in farad

Rearranging the equation to solve for t , we get:

$$-\ln(V/E)(RC) = t$$

From the RTC datasheet, we can get the minimum oscillator operating voltage as well as the maximum V_{BACKUP} current (I_{BACKUP}). To estimate the load resistance, R , we divide the datasheet V_{BACKUP} maximum by I_{BACKUP} maximum (because the worse-case current occurs at the maximum input voltage). For this example, V_{BACKUP} maximum is 3.7V and I_{BACKUP} maximum is 1000nA, or $3.7/1\text{e-}6$ or 3,700,000 ohms. Assuming that the capacitor value is 0.2F and has been charged to 3.3V, that the I_{BACKUP} current maximum is 1000nA, and that the minimum oscillator operating voltage is 1.3V, the backup time would be calculated as:

$$\begin{aligned} &-\ln(V_{\text{BACKUP MIN}}/V_{\text{BACKUP MAX}})(V_{\text{BACKUP MAX}}/I_{\text{BACKUP MAX}}) = \\ &-\ln(1.3/3.3)(3,700,000*0.2) = \\ &689,353 \text{ seconds, or } 191.5 \text{ hours} \end{aligned}$$

By changing the value of C , the estimated operating time while running from the backup capacitor can be determined.

These calculations can be done using the [on-line calculator](#)

The supercapacitor calculator implements the three equations shown above.

More Information

DS1302:	QuickView	-- Full (PDF) Data Sheet	-- Free Samples
DS1305:	QuickView	-- Full (PDF) Data Sheet	-- Free Samples
DS1306:	QuickView	-- Full (PDF) Data Sheet	-- Free Samples
DS1339:	QuickView	-- Full (PDF) Data Sheet	-- Free Samples
DS1340:	QuickView	-- Full (PDF) Data Sheet	-- Free Samples
DS1374:	QuickView	-- Full (PDF) Data Sheet	-- Free Samples
DS1388:	QuickView	-- Full (PDF) Data Sheet	
DS1390:	QuickView	-- Full (PDF) Data Sheet	-- Free Samples
DS1391:	QuickView	-- Full (PDF) Data Sheet	-- Free Samples
DS1392:	QuickView	-- Full (PDF) Data Sheet	-- Free Samples
DS1393:	QuickView	-- Full (PDF) Data Sheet	-- Free Samples
DS1672:	QuickView	-- Full (PDF) Data Sheet	-- Free Samples
MAX6910:	QuickView	-- Full (PDF) Data Sheet	-- Free Samples